

CORDE NATUS EX PARENTIS

232

v

C

Orde na-tus ex Pa-réntis Ante mundi ex-ór-di-um

Alpha et O cogno-mi-ná-tus Ipse fons et cláusu-la

Ómni-um quæ sunt, fu- é- runt Quæque post fu-tú-ra sunt:

R. Sæcu-ló-rum sæcu-lis.

Begotten of the Father's love before the world was made, called Alpha and Omega, he the source and end of all things that are, that were, and that shall be: for ever and ever.

2. O be-á-tus ortus il-le Virgo cum pu-ér-pe-ra E-di-

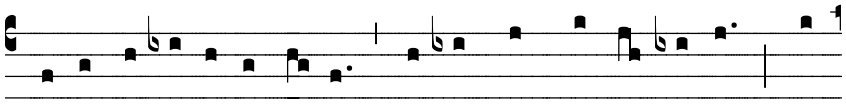
dit nostram sa-lú-tem Fe-ta sancto Spí-ri-tu, Et pu-er

redémptor or-bis Os sacrá-tum pró-tu-lit:

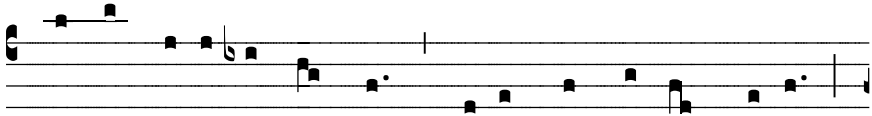
R. Sæcu-ló-rum sæcu-lis.

*Corde natus ex Parentis, cont.*

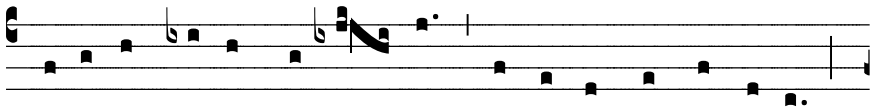
O blessed birth, when the Virgin conceiving of the Holy Spirit brought forth our salvation, and when the Child, redeemer of the world, lifted his sacred face: for ever and ever.



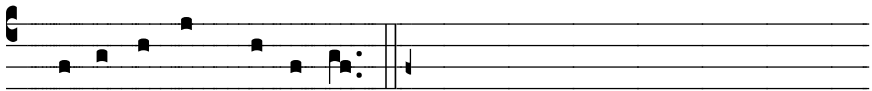
3. Psallat al-ti-túdo cæ-li, Psal-lant omnes án-ge-li, Quid-



quid est vírtu-tis unquam Psallant in laudem De-i;



Nulla linguá-rum si-lé-scat Vox et omnis cónsonet:



R. Sæcu-ló-rum sæcu-lis.

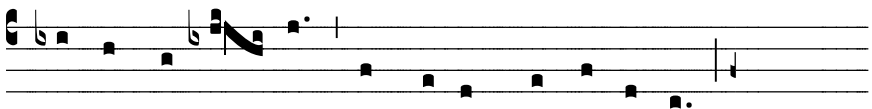
Let the height of heaven sing; sing, all ye angels; whatever has any power, sing unto the praise of God. Let no tongue fall silent, and let every voice sound forth: for ever and ever.



4. Te senes et te juvéntus, Parvu-ló-rum te cho-rus, Turba



matrum virgi-númque Símpli-ces pu-él-lu-læ Vo-ce con-

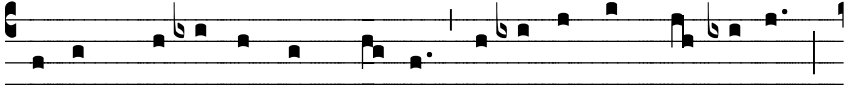


córdes pu-dí-cis Pérstrepent concénti-bus:



℞. Sæcu-ló-rum sæcu-lis.

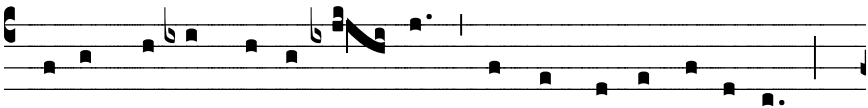
Harmonious in voice, old men and young men, a choir of children, the throng of mothers and virgins, simple lasses resound in modest concerts: for ever and ever.



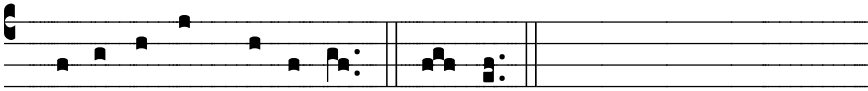
5. Ti-bi, Christe, sit cum Pa-tre Ha-gi- óque Pnéuma-te



Hymnus, de-cus, laus pe-rénnis, Gra-ti- á-rum á-cti- o,



Honor, virtus, victó- ri- a, Regnum æ-terná-li-ter:



℞. Sæcu-ló-rum sæcu-lis. A-men.

To thee, O Christ, with the Father and the Holy Spirit, be hymns, glory, perennial praise, giving of thanks, honor, virtue, victory, and eternal kingship: for ever and ever.