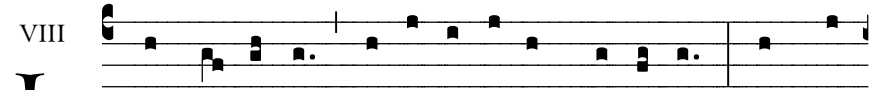


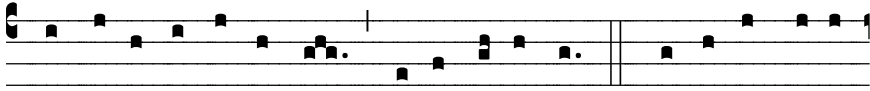
163

VIII



L

UX æ-térna * lú-ce- at e- is, Dómi-ne: Cum san-



ctis tu- is in æ-térnum, qui- a pi- us es. √. Réqui- em ætér-



nam dona e- is, Dómine, et lux perpé-tu- a lú-ce- at



e- is. * Cum sanctis tu- is in æ-térnum, qui- a pi- us es.

May eternal light shine upon them, O Lord: With Thy Saints for evermore, for Thou art gracious. √. Eternal rest grant unto them, O Lord; and let perpetual light shine upon them * with Thy Saints for evermore, for Thou art gracious.