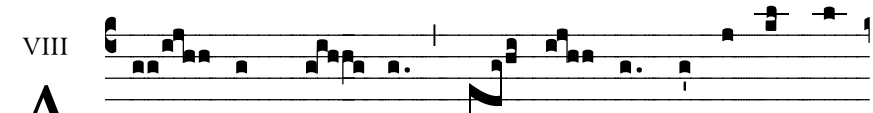


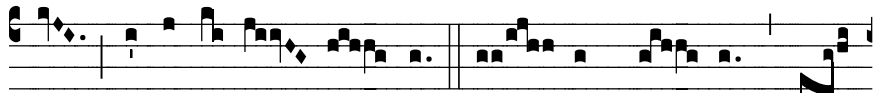
AGNUS DEI I

141

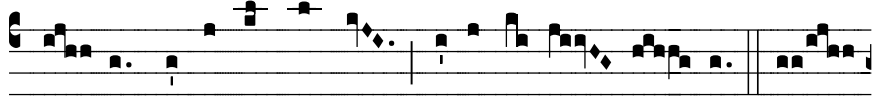
VIII



A - gnus De- i, *qui tol- lis peccá- ta mun-



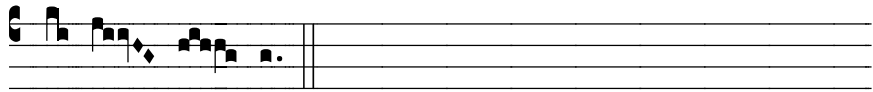
di: mi-se-ré- re no- bis. A- gnus De- i, *qui



tol- lis peccá- ta mundi: mi-se-ré- re no- bis. A-



gnus De- i, *qui tol- lis peccá- ta mundi: dona



no- bis pa- cem.